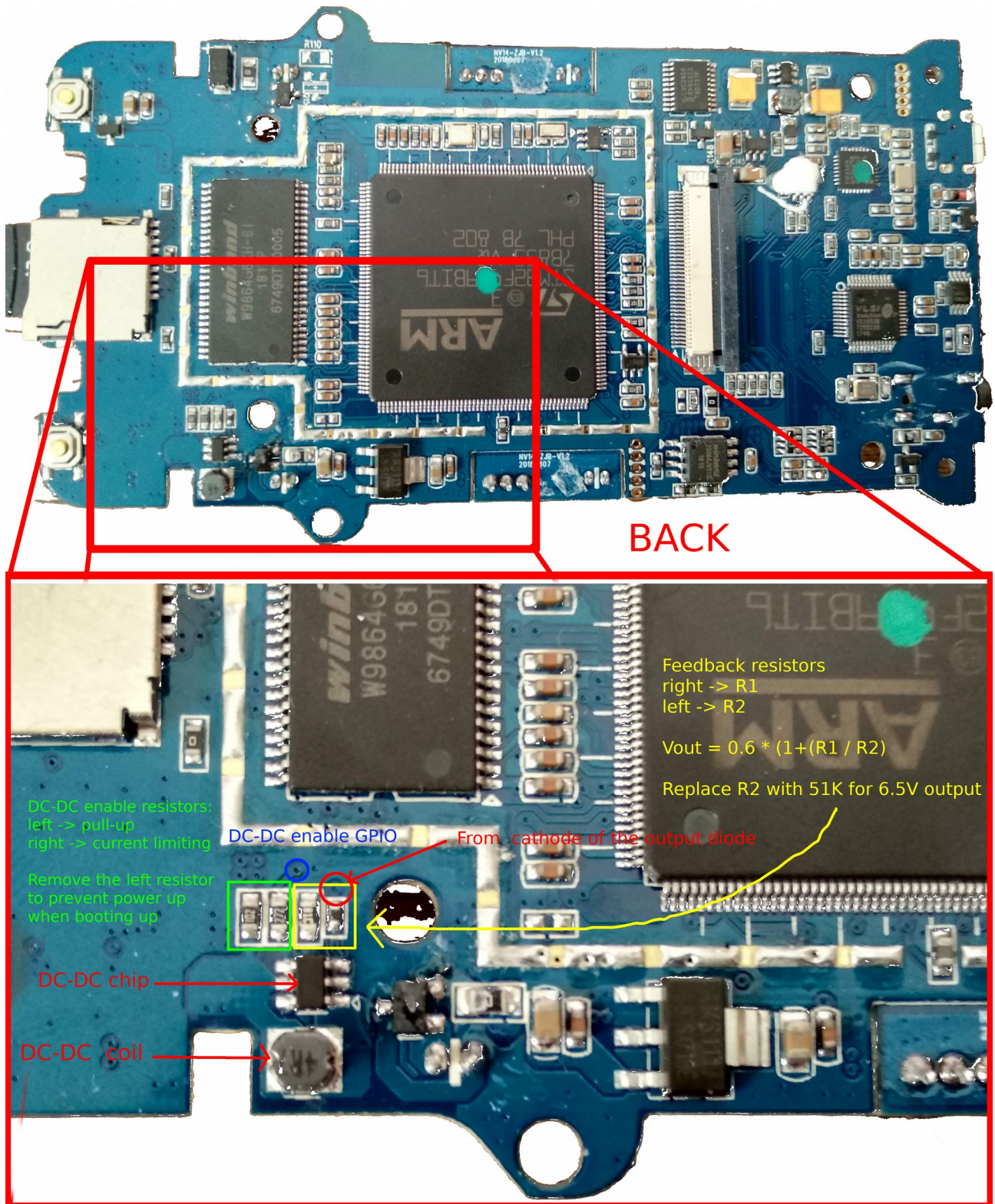
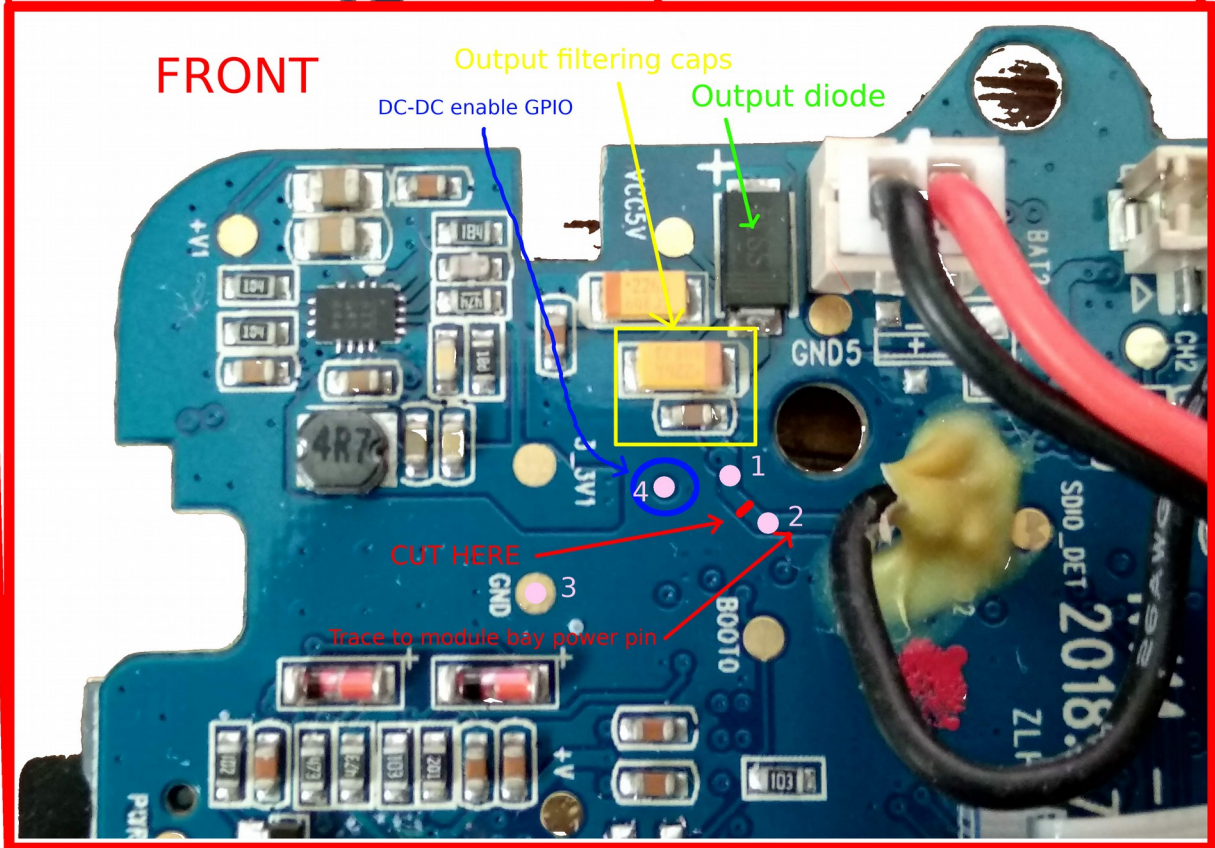
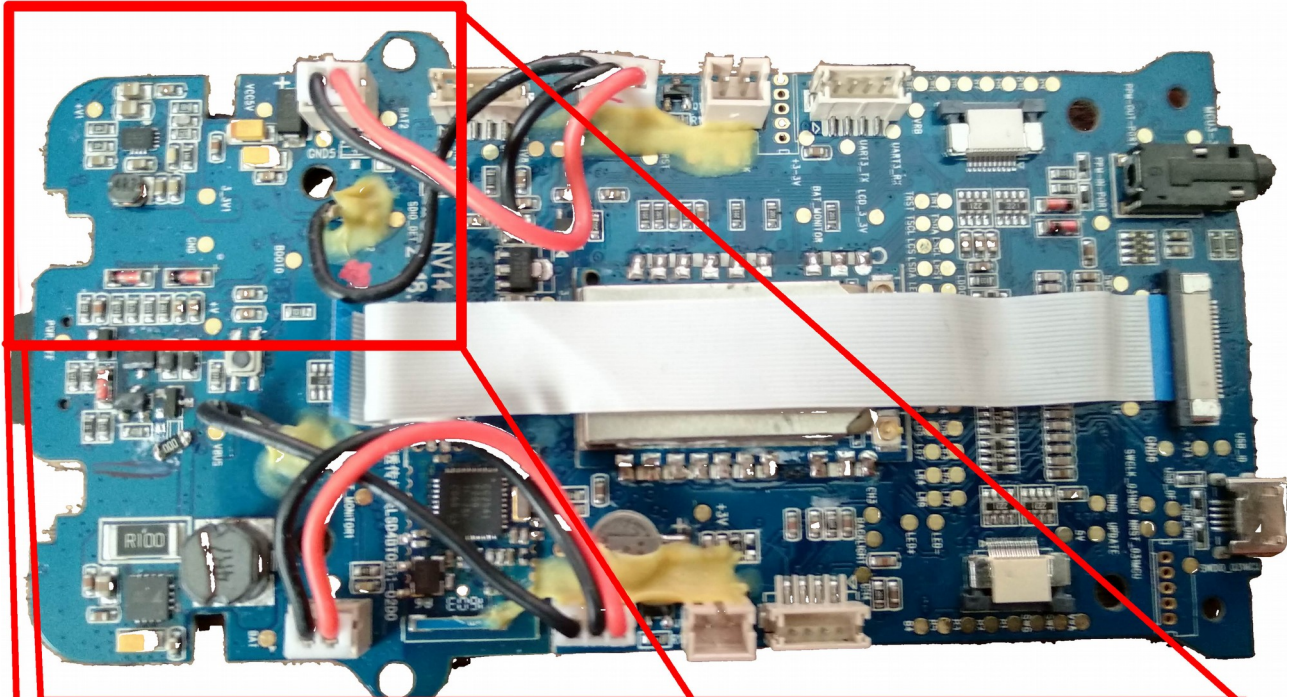
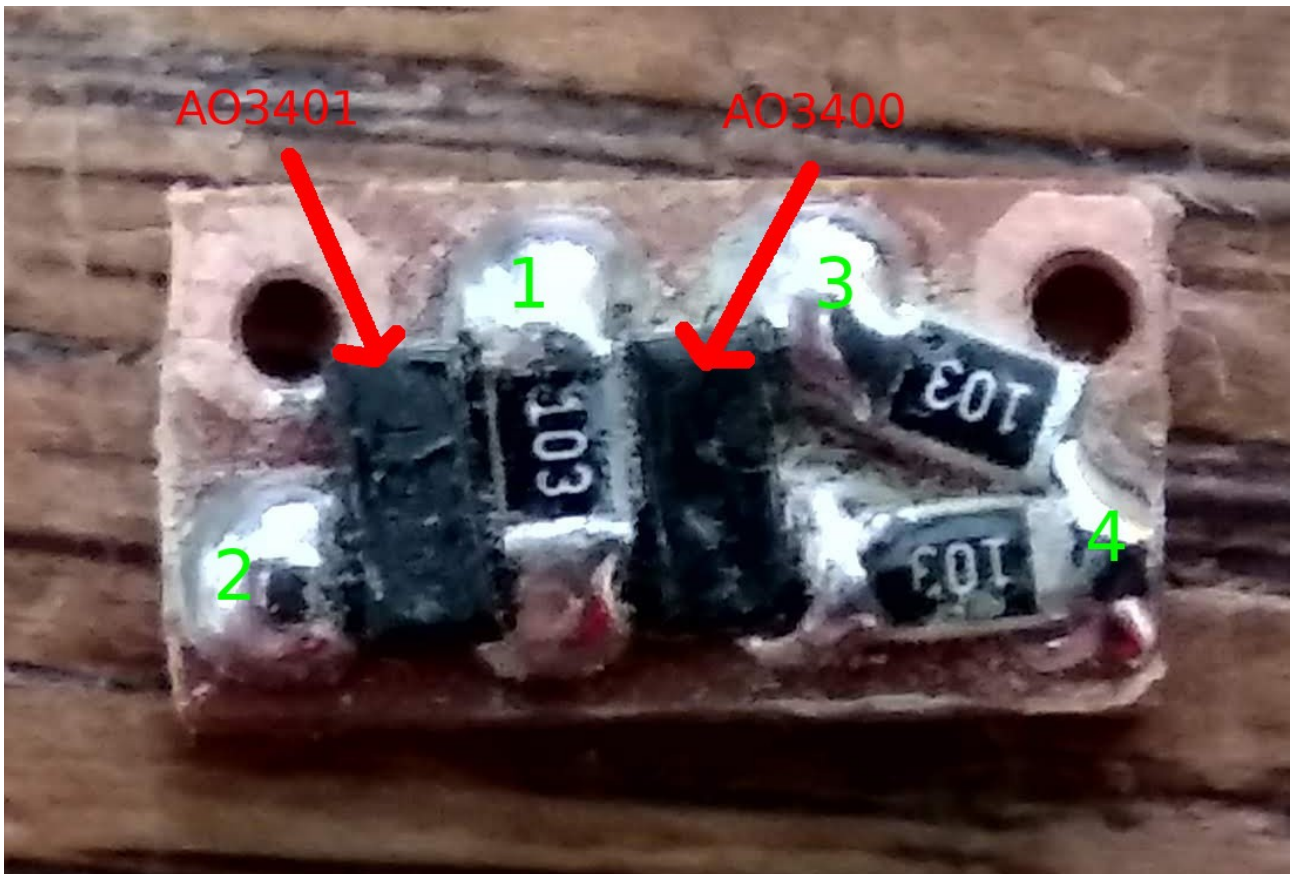
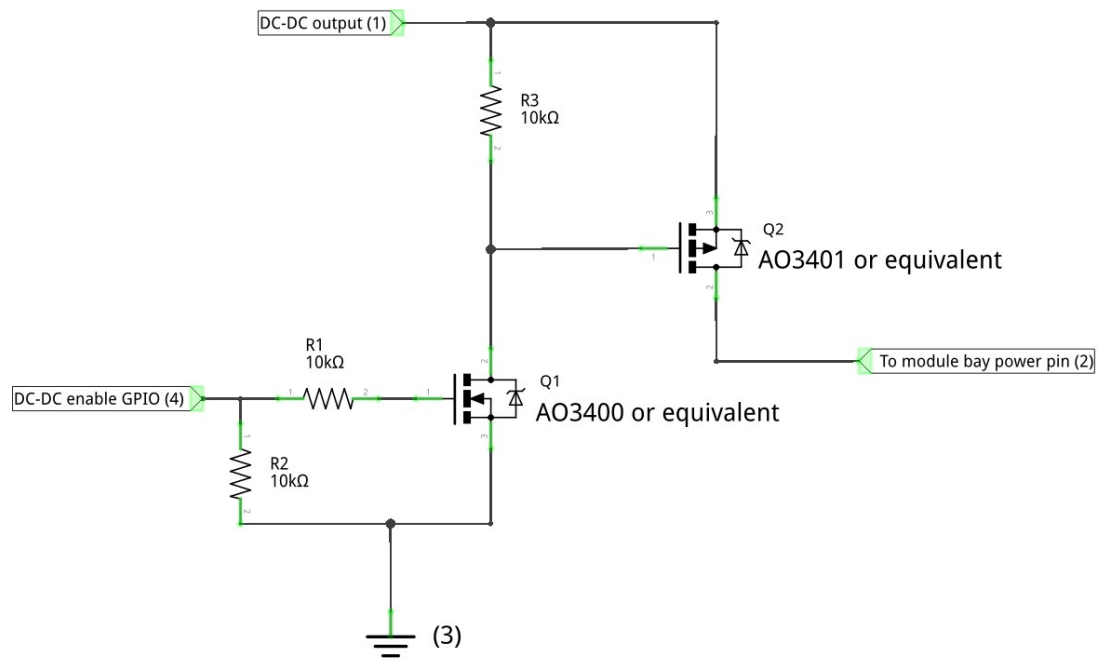


# Nirvana module bay power mod







# Instructions :

1. Build the little switch circuit
2. Cut the trace between the points 1 and 2 (see front picture)
3. Scrape the solder resist off the traces at point 1 and 2 to be able to solder on it. Alternatively to scraping point 1 you can connect to the bottom of the diode or right of the caps (yellow box in the front picture)
4. Scrape the solder resist off point 4 (front picture) if you're going to use it. An alternative is to use the top of the resistor in the green box (back picture)
5. Connect the switching circuit (4 points to the respective points on the radio's PCB (see front picture)
6. Remove the pull up resistor, left resistor in the green box, back picture (optional)
7. Replace the DC-DC feedback resistor to get a higher voltage on the output (optional, see back picture)

Written by @shellixz with the help of @diehertz

# Final result :

